



OKTANTA

> Design and manufacture of
non-destructive testing equipment

SwiftScan Pulsed Eddy Current Flaw Detector



SwiftScan Pulsed Eddy Current Flaw Detector Wide-Area Pipeline Inspection in a Single Pass

Inspect Faster, Inspect Smarter

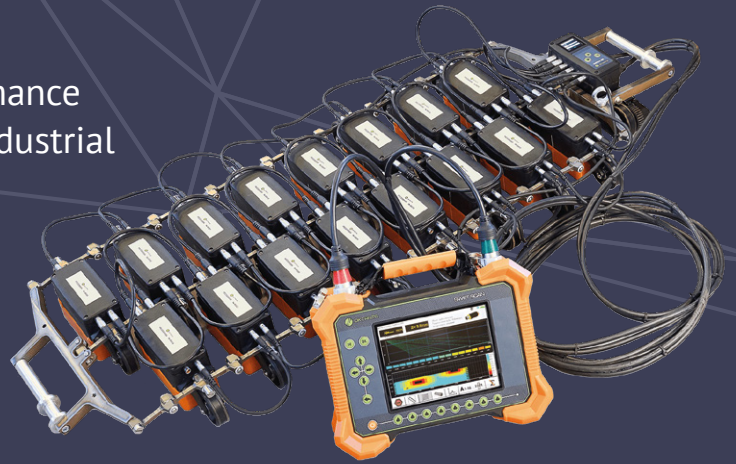
The SwiftScan is designed for high-performance inspection of corrosion on pipelines and industrial assets with real-time C-scan imaging.

The SwiftScan can detect:

- corrosion under insulation,
- corrosion blistering and scabs,
- flow-accelerated corrosion,
- corrosion under fireproofing,
- corrosion under coatings.

The SwiftScan can scan through **thick insulation**, as well as through **aluminum, stainless steel**, and **galvanized steel insulation jackets** – without insulation removal or surface preparation. Insulation can be made from any non-conductive coating: polyurethane, mineral wool, plastic, paint, air.

The SwiftScan detects **general and pitting corrosion** on the **internal and external pipe surfaces**.



Key Benefits

- Full-thickness inspection: detects general and pitting corrosion on internal and external pipe surfaces
- Fast measurements: performance is up to 80 mm/s (3.1 in/s)
- Deep penetration: works through insulation up to 300 mm (12 in) thick and through aluminum, stainless steel, and galvanized steel insulation jackets
- No insulation removal. No surface preparation. No production downtime
- Enables in-service inspections. Inspect pipelines at operating temperatures from $-200\text{ }^{\circ}\text{C}$ to $+600\text{ }^{\circ}\text{C}$
- Intuitive visualization: real-time A-scan and C-scan display on bright color screen
- Rugged design: shockproof housing with tempered, impact-resistant glass protection
- Extended autonomy: 8 hours of continuous operation on a single battery charge
- Safe for operators and the environment, no radiation



- Shockproof plastic housing with protective rubber inserts
- Bright enlarged color display protected by tempered impact-resistant glass
- The adjustable stand, the top handle and the shoulder strap make the device convenient for on-site inspections
- Replaceable battery lasts up to 8 hours without recharging
- Rugged, easy-to-use keyboard
- USB A and USB B ports. One-Click Copy: data transfer directly to an external USB drive
- The device is lightweight compared to analogues

SwiftScan Environment PEC Flaw Detector & Probe Assembly & SwiftViewer Software See corrosion hidden under insulation. Faster. Safer. Smarter

Unmatched Coverage and Performance

SwiftScan's multi-element probe assembly measures averaged metal thickness under each probe element across a **wide inspection area**.

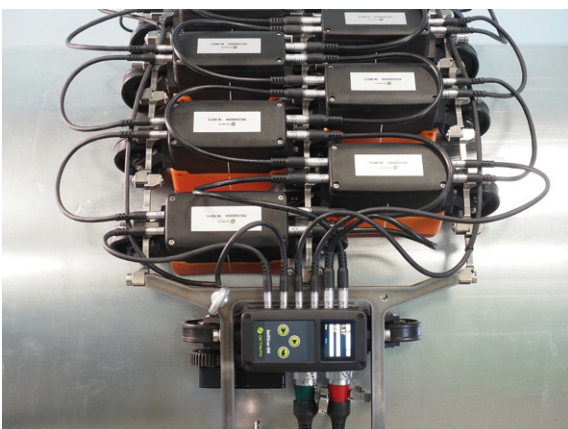
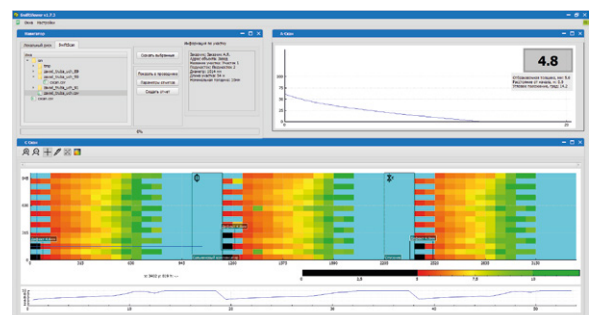
The probe assembly performs in-service inspections of pipes with **outer diameters from 15 mm (0.6 in) up to flat surfaces**.

There is **no need to remove insulation** or prepare the surface. The probe assembly penetrates up to 300 mm (12 in) of non-conductive insulation (polyurethane, mineral wool, plastic, paint) and works through aluminum, stainless steel, and galvanized steel insulation jackets.



Advanced Analysis and Reporting

The SwiftScan can transfer measurement results to a PC or directly to a USB drive. **SwiftViewer desktop software** – advanced visualization and reporting software – enables advanced data analysis and the creation of detailed inspection reports, simplifying the management of large data sets.



- 16 probes for wide-area, single-pass coverage
- Inspect pipe outer diameters from 15 mm (0.6 in) up to flat surfaces
- Control from the device and directly on site from the control unit
- Current probe coordinates and metal thickness on the control unit screen
- Encoder for automatic detection of probe assembly movement
- Ergonomic wheels for overcoming small obstacles and uneven surfaces
- Convenient handles for moving and positioning

SwiftScan Technical Specifications

GENERAL	
Range of measured thickness for steel	0–35 mm (0–1.4 in) (insulation thickness dependent)
Average thickness measurement error	10 %
Range of insulation coating thickness	0–300 mm (0–12 in)
Minimum pipe diameter	15 mm (0.6 in)
Dynamic scan speed	Up to 80 mm/s (3.1 in/s)
Insulation jackets	Stainless steel Aluminum Galvanized steel
ENVIRONMENTAL	
Metal temperature range	–200 to +600°C (–328 to +1112°F)
Insulation jacket surface temperature	–20 to +60°C (–4 to +140°F)
Operating ambient temperature	–20 to +50°C (–4 to +122°F)

DEVICE	
Dimensions	335 × 250 × 110 mm (13.2 × 9.8 × 4.3 in)
Weight	4.2 kg (9.3 lb)
Cable length (from probe assembly to device)	5 m (16.4 ft)
Display	Color LCD with tempered impact-resistant glass
Housing	Shockproof plastic with protective rubber inserts
Power supply	Batteries or 100–240 V, 50–60 Hz
Battery life	8 hours of continuous operation
Connectors	USB A and USB B ports, charger port
PROBE ASSEMBLY	
Number of probes	16 probes
Control	From control unit with display on assembly or from device itself
Presence of encoder	Yes

Contacts:

34 Olga Berggholz Street,
Saint Petersburg, Russia
oktanta-ndt.com

+7(812) 385-54-28
info@oktanta-ndt.com

Our dealers:

China
Beijing LAB Hightech instrument Ltd.
www.bj-lab.com
Phone: +86-10-58447318
Fax: +86-10-58850811
Email: ben.zhang@bj-lab.com

South Korea
Dae Hyeon Tech
www.daehyeontech.co.kr
Phone: +82-10-4761-2911
Email: halim1475@naver.com

Israel
GABI SHOEF LTD.
www.gabishoef.co.il
Phone: +97248201735
Email: sasha@gabishoef.co.il